

Proposed Level 1

nb : minimum area of bedroom apertures overlooking yard to be of 1.1m²

- 1X - 3 bedroom apartments
- 3X - 2 bedroom apartments
- 2X - 1 bedroom apartments
- 1X - class 4A - office
- 9X garages & 1 car space

notes for CRPD :

- external paving material is to be non slip and flush mounted
- max threshold not to exceed 15mm with a chamfered edge
- refuge area provided within the stairwell core
- minimum width of external doors / fire doors to be not less than 1.1m
- minimum width of internal doors to be not less than 1m
- internal corridors to be not less than 1.2m



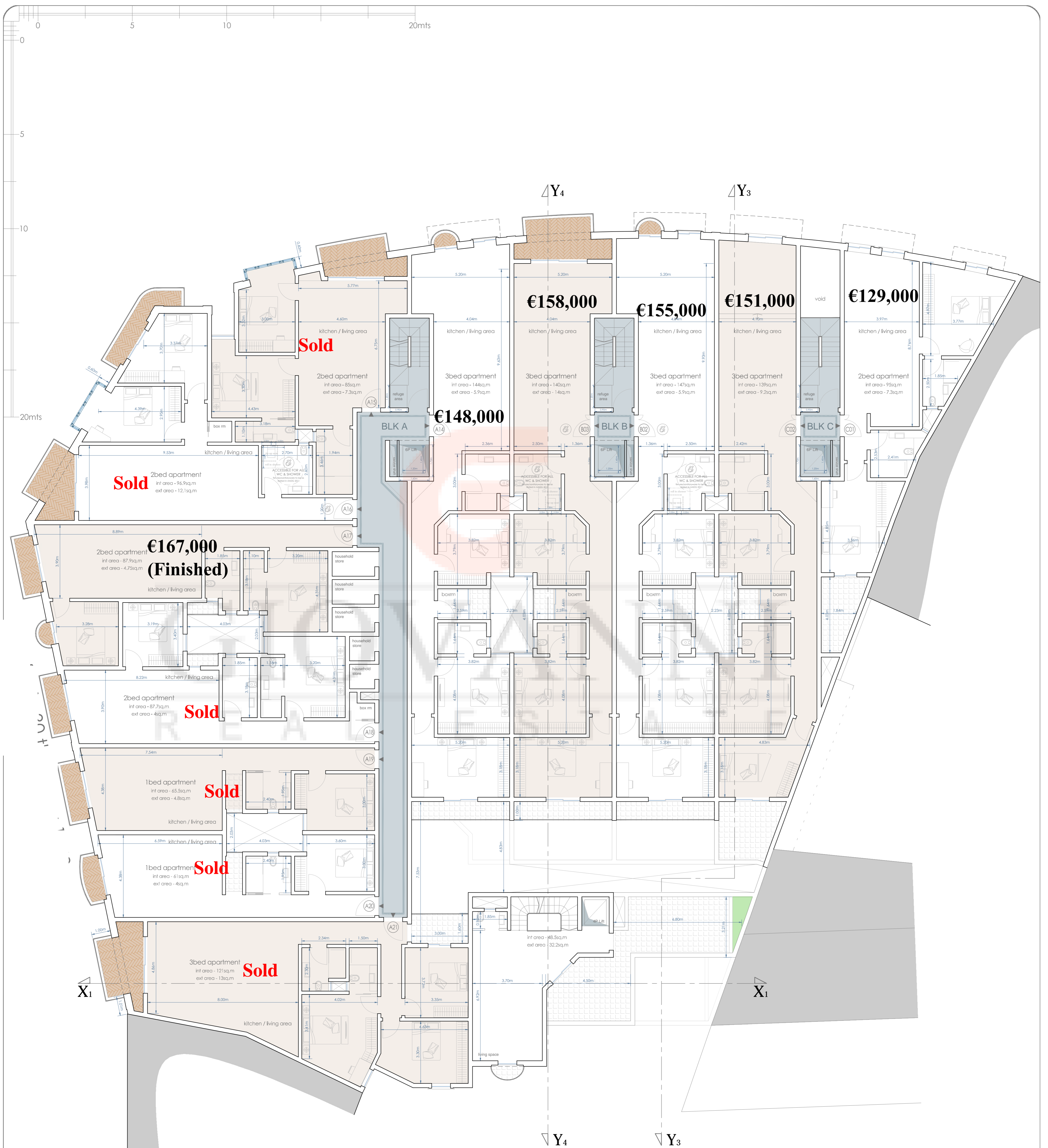
Proposed Level 2

nb : minimum area of bedroom apertures overlooking yard to be of 1.1m²

- 4X - 3 bedroom apartments
- 3X - 2 bedroom apartments
- 3X - 1 bedroom apartments

notes for CRPD :

- external paving material is to be non slip and flush mounted
- max threshold not to exceed 15mm with a chamfered edge
- refugee area provided within the stairwell core
- minimum width of external doors / fire doors to be not less than 1.1m
- minimum width of internal doors to be not less than 1m
- internal corridors to be not less than 1.2m



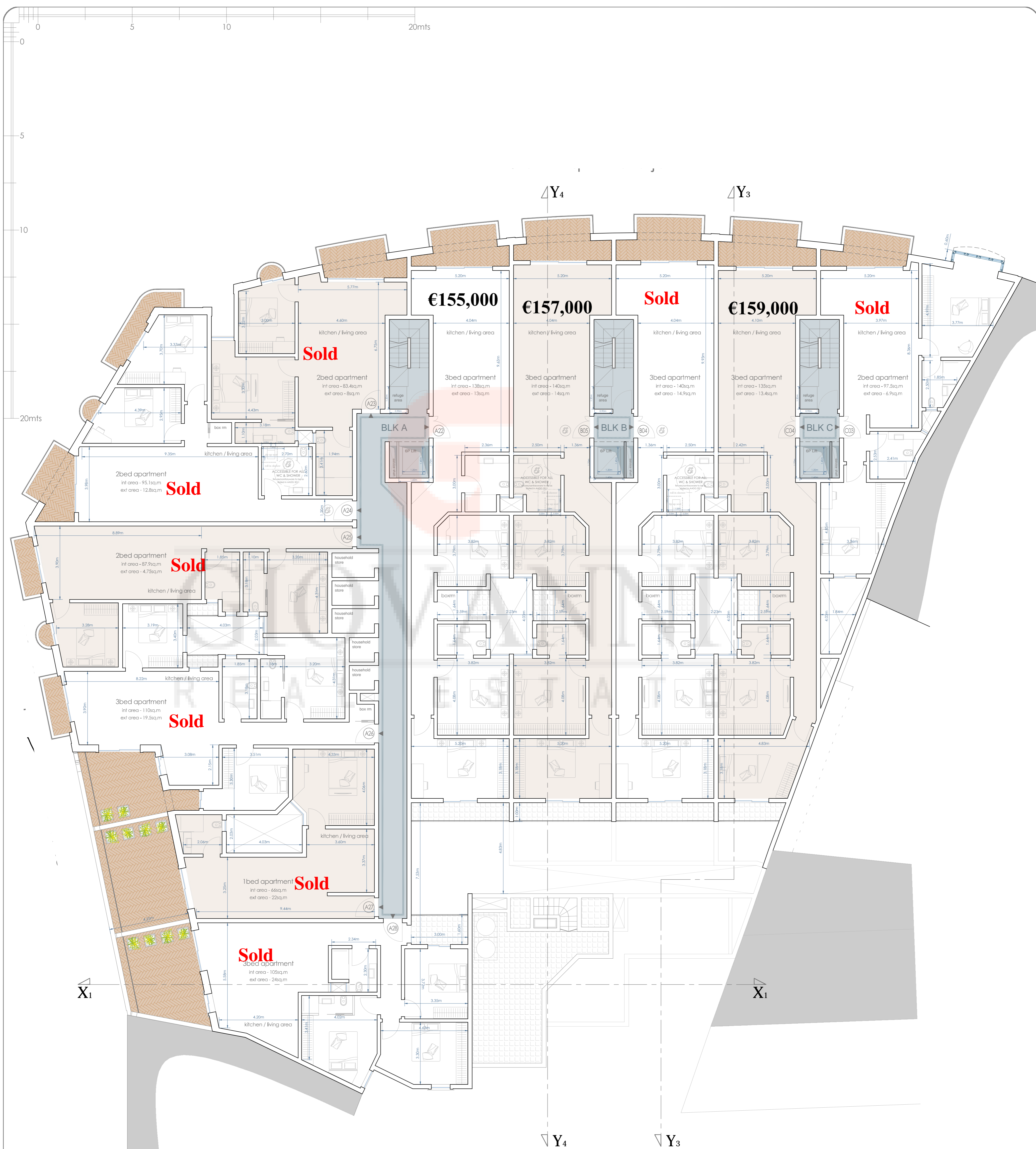
Proposed Level 3

nb : minimum area of bedroom apertures overlooking yard to be of 1.1m²

- 5X - 3 bedroom apartments
- 5X - 2 bedroom apartments
- 2X - 1 bedroom apartments

notes for CRPD :

- external paving material is to be non slip and flush mounted
- max threshold not to exceed 15mm with a chamfered edge
- refugee area provided within the stairwell core
- minimum width of external doors / fire doors to be not less than 1.1m
- minimum width of internal doors to be not less than 1m
- internal corridors to be not less than 1.2m



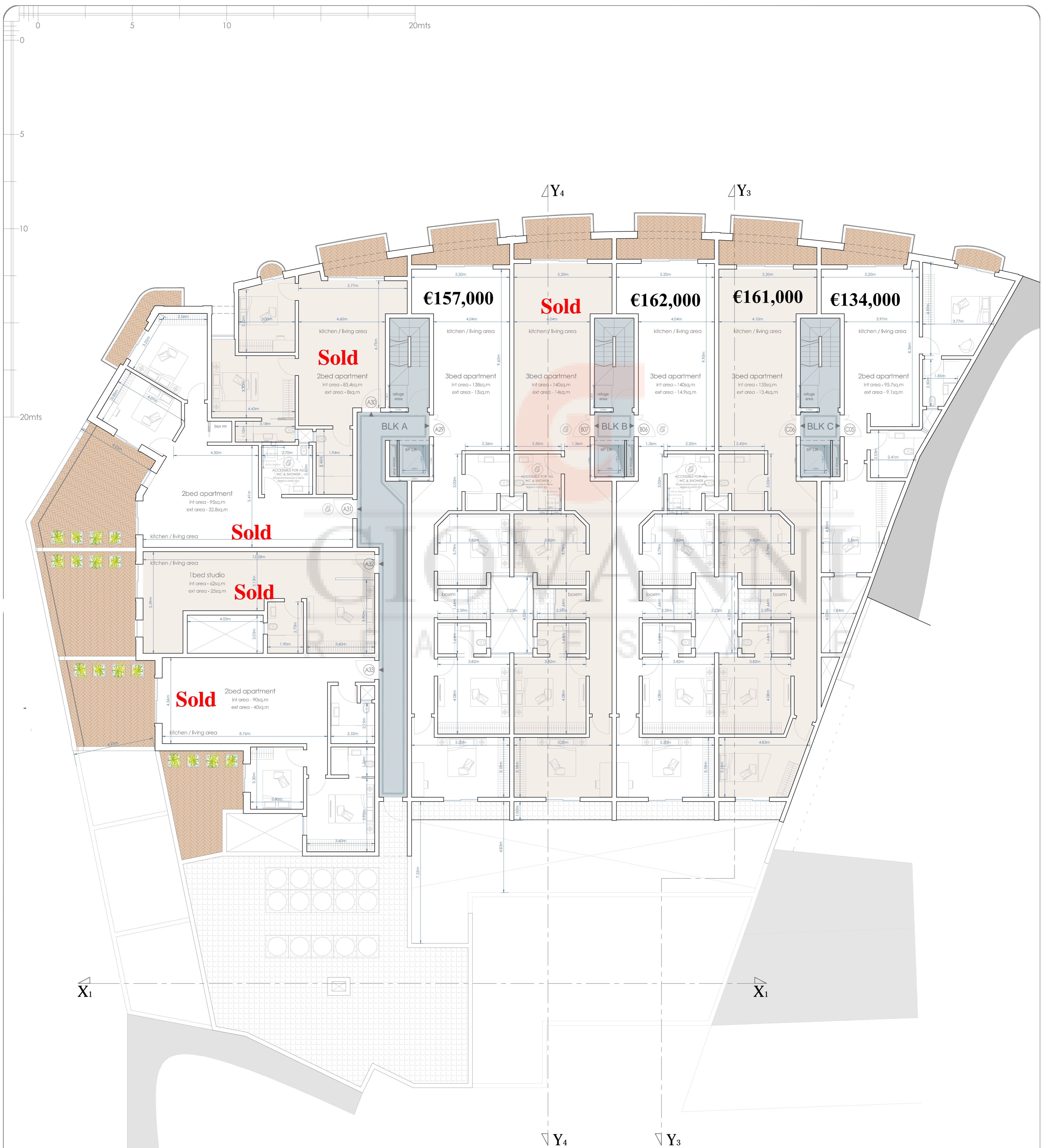
Proposed Level 4

nb : minimum area of bedroom apertures overlooking yard to be of 1.1m²

- 6X - 3 bedroom apartments
- 4X - 2 bedroom apartments
- 1X - 1 bedroom apartment

notes for CRPD :

- external paving material is to be non slip and flush mounted
- max threshold not to exceed 15mm with a chamfered edge
- refugee area provided within the stairwell core
- minimum width of external doors / fire doors to be not less than 1.1m
- minimum width of internal doors to be not less than 1m
- internal corridors to be not less than 1.2m



Proposed Level 5

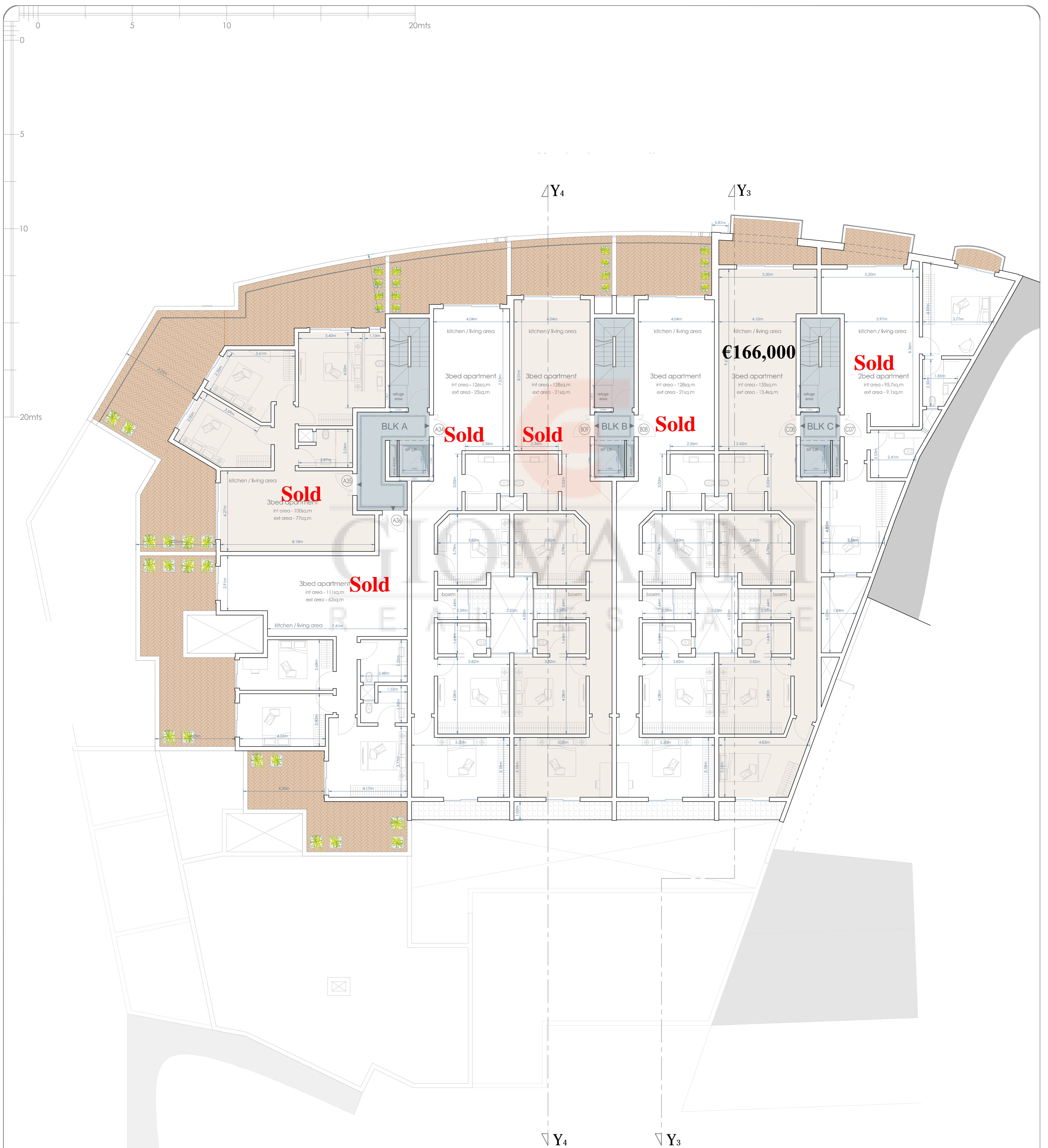
nb : minimum area of bedroom apertures overlooking yard to be of 1.1m²

- 4X - 3 bedroom apartments
- 4X - 2 bedroom apartments
- 1X - 1 bedroom apartment

notes for CRPD :

- external paving material is to be non slip and flush mounted
- max threshold not to exceed 15mm with a chamfered edge
- refuge area provided within the stairwell core
- minimum width of external doors / fire doors to be not less than 1.1m
- minimum width of internal doors to be not less than 1m
- internal corridors to be not less than 1.2m





Proposed Level 6

nb : minimum area of bedroom apertures overlooking yard to be of 1.1m²

6X - 3 bedroom apartments
1X - 2 bedroom apartment

notes for CRPD :

- external paving material is to be non slip and flush mounted
- max threshold not to exceed 15mm with a chamfered edge
- refugee area provided within the stairwell core
- minimum width of external doors / fire doors to be not less than 1.1m
- minimum width of internal doors to be not less than 1m
- internal corridors to be not less than 1.2m



Proposed Level 7

nb : minimum area of bedroom apertures overlooking yard to be of 1.1m²

- 1X - 3 bedroom apartment
- 1X - 1 bedroom apartment

Proposed roof level

notes for CRPD :

- external paving material is to be non slip and flush mounted
- max threshold not to exceed 15mm with a chamfered edge
- refuge area provided within the stairwell core
- minimum width of external doors / fire doors to be not less than 1.1m
- minimum width of internal doors to be not less than 1m
- internal corridors to be not less than 1.2m

